

BRISK

TANKLESS REVERSE OSMOSIS WATER FILTRATION SYSTEM

Owner's Manual



BRISK

Congratulations on your new purchase. This compact Tankless Reverse Osmosis Water Filtration System is engineered to provide you with high flow clean and great-tasting water. Its 5-stage RO filtration process removes up to 99% of 1,000 plus harmful contaminants. The innovative All-in-One combo filter design made it possible for high water flow, less water waste, longer filter life and small footprint altogether. In addition, the filter change can be done in seconds with a simple lift and pull.

Please refer to this owner's manual for product information, installation, care and use, and troubleshooting instructions, and for additional Important Safety Information.



We recommend replacing the filter every 3 years. Please visit <https://www.jubei-group.com/> for replacement filters.

TANKLESS REVERSE OSMOSIS WATER FILTRATION SYSTEM

TABLE OF CONTENTS

General & Safety Precautions 4

Product Introduction 5-6

Box Contents 7

Installation 8-12

Operation 13-14

Maintenance 15

Troubleshooting 16

Warranty 17

General

Read all sections of this manual before installing and operating this tankless reverse osmosis system. Make certain your water supply complies with the following operating specifications. Failure to do so may reduce the effectiveness of the system and will void the warranty.

Feedwater	Municipal Tap Water
Feedwater Pressure	30-80 psi
Feedwater Temperature	40-100 °F
Operating Ambient Temperature	41-100 °F
Operating Ambient Humidity	≤90%

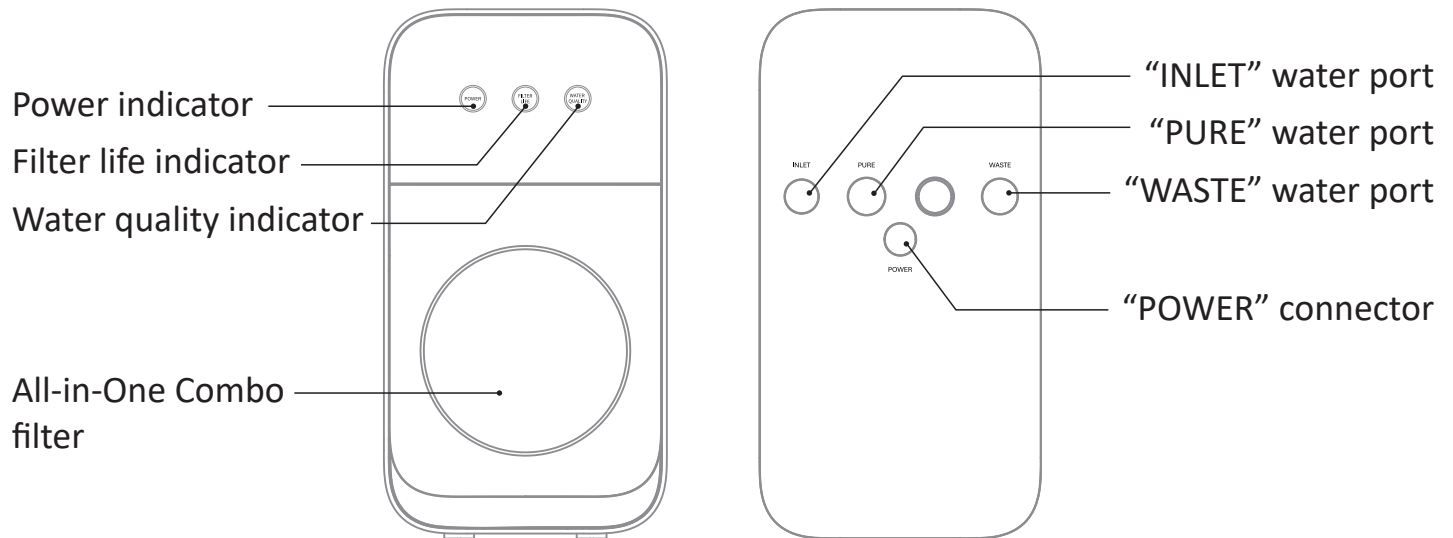
This product is designed for residential use, ideally for under sink installation.

Keep the manual for future reference.

Safety Precautions

- The feedwater must be from municipal tap water or microbiologically safe and adequately disinfected.
- Install on cold water line only.
- Make certain that installation complies with all state and local laws and regulations.
- Do not use system if power cord, plug or RO system is damaged.
- Do not store or expose system to temperature lower than 32°F to prevent it from freezing.
- Do not allow children near system without adult supervision.
- Do not disassemble or modify system without manufacturer's approval.
- Do not install system in a place exposed to direct sunlight or hazardous chemicals.
- Do not install system is neat heat sources.
- Do not place heavy objects on top of system.
- Do not use system when sewer is clogged.
- After prolonged periods of non-use such as during a vacation, it is recommended that the system be flushed for 15 minutes before it is used.

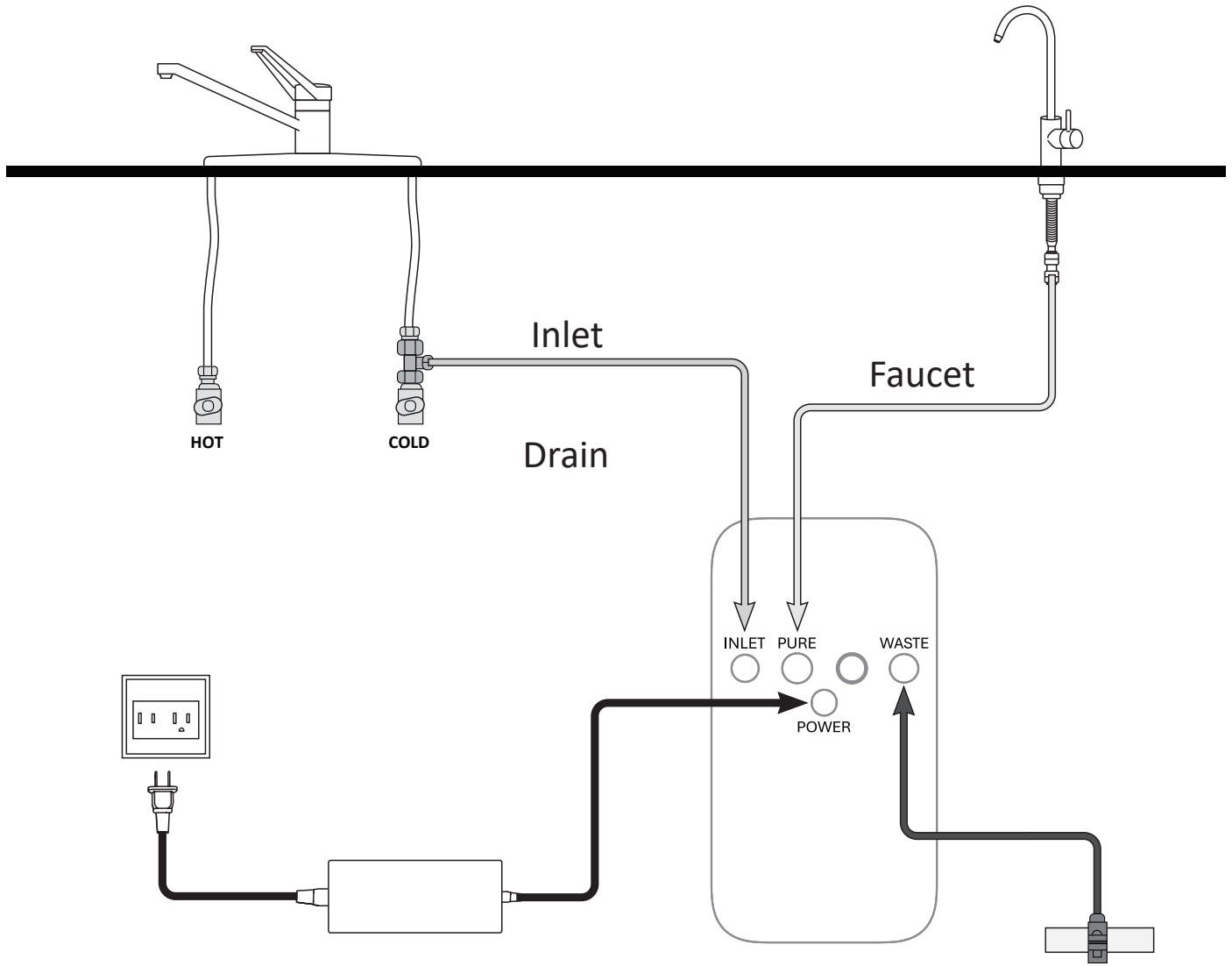
Product Overview



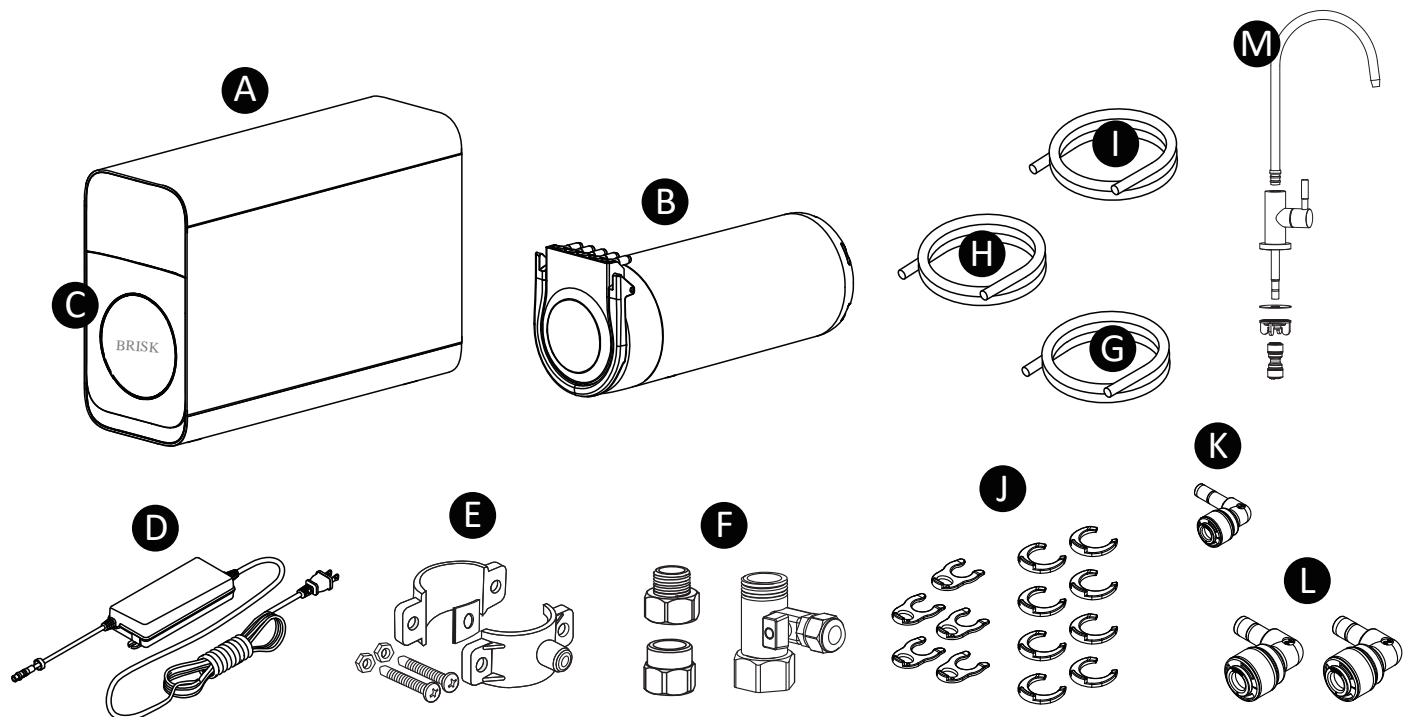
Specifications

MODEL	BSK600	BSK800	BSK1000	BSK1200
Purified Production Rate	600 GPD	800 GPD	1000 GPD	1200 GPD
Purified Water Flow Rate	0.42 gpm	0.56 gpm	0.69 gpm	0.83 gpm
Total Purified Water Capacity	1,930 Gallon			
Filtration Stage	5			
Pure to Drain	2:1		3:1	
Filter	All-in-One Combo filter			
Filter Life	3 Years			
TDS Creep	None			
Power Supply	100-120V/60Hz			
Rated Total Power	100W			
Dimension (WxHxD)	6 3/4" x 12 1/2" x 17 7/8"			
Weight	26.2 lb			

Piping Diagram



Read entire manual to ensure all parts listed are present before installation.



A Tankless RO Machine

B All-in-One Combo Filter

C Filter Cover

D Power Cord Adaptor

E Drain Saddle

F Inlet Tee Valve

G Tubing 3/8" White x 60"

H Tubing 3/8" Blue x 60"

I Tubing 1/4" Red x 60"

J Lock Clip

K 1/4" Elbow Quick Connect Fitting

L 3/8" Elbow Quick Connect Fitting

M RO Faucet Set

Tools and Materials Required

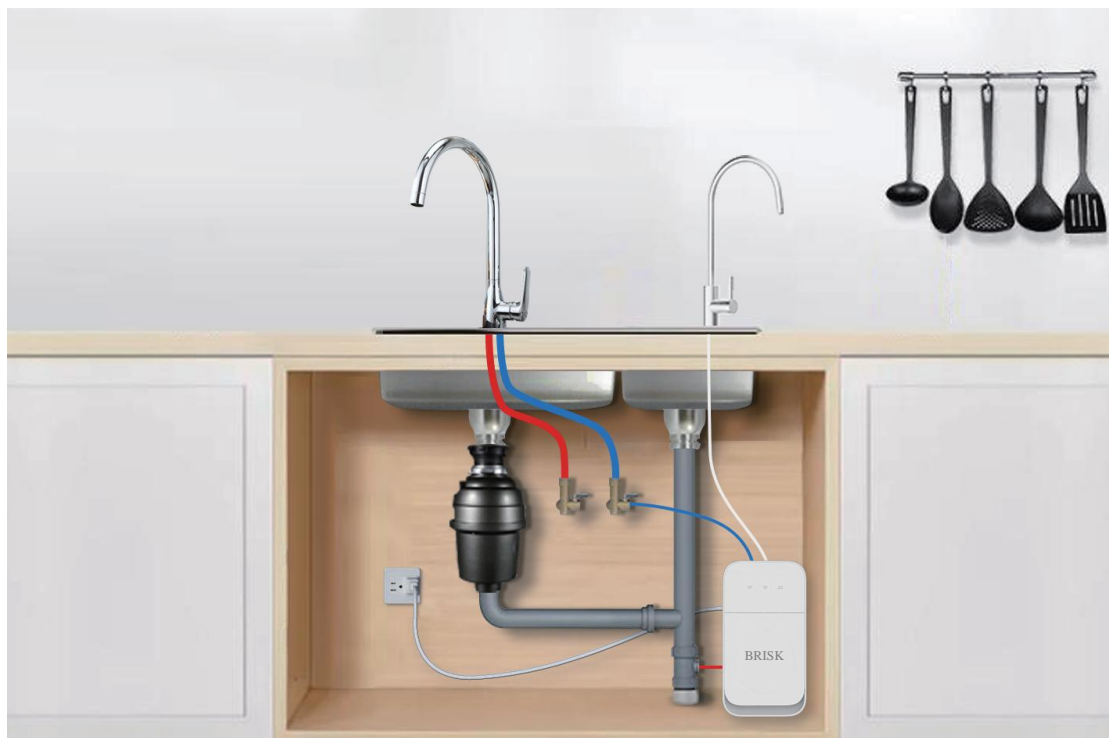
- Tape measure
- Teflon tape
- Slotted and Phillips head
- Hand or electric drill with drill bits
- Adjustable wrench
- Tube cutter or utility knife
- Flash light
- Safety glasses
- Pencil
- Pan or bucket
- Towel

STEP 1 Site Setup

Note: This system requires an existing faucet hole 1" to 1 1/2" in diameter in the sink or countertop to install the supplied dedicated faucet. You may also replace an existing kitchen sink sprayer, soap dispenser, or pre-existing hole on the sink or countertop.

If drilling a new hole, ensure faucet body will mount flat against surface and there is sufficient tubing between faucet body and system manifold. If drilling, we strongly recommend using a professional. Please wear safety glasses when drilling.

1. Unpack and unwrap box contents.
2. Turn off COLD water supply. Turn on the kitchen faucet to release pressure and allow water to drain from the line.
3. Temporarily place tankless RO machine into the under sink cabinet or desired location to ensure adequate space and proper positioning.
4. Measure white tubing from faucet hole to tankless RO machine, measure black tubing from cold-water supply shut-off valve to tankless RO machine, and then measure red tubing from tankless RO machine to drain. Ensure all tubing lengths are sufficient for making connections. Do not cut tubing before following next instructions.
5. Remove tankless RO machine to begin installation.



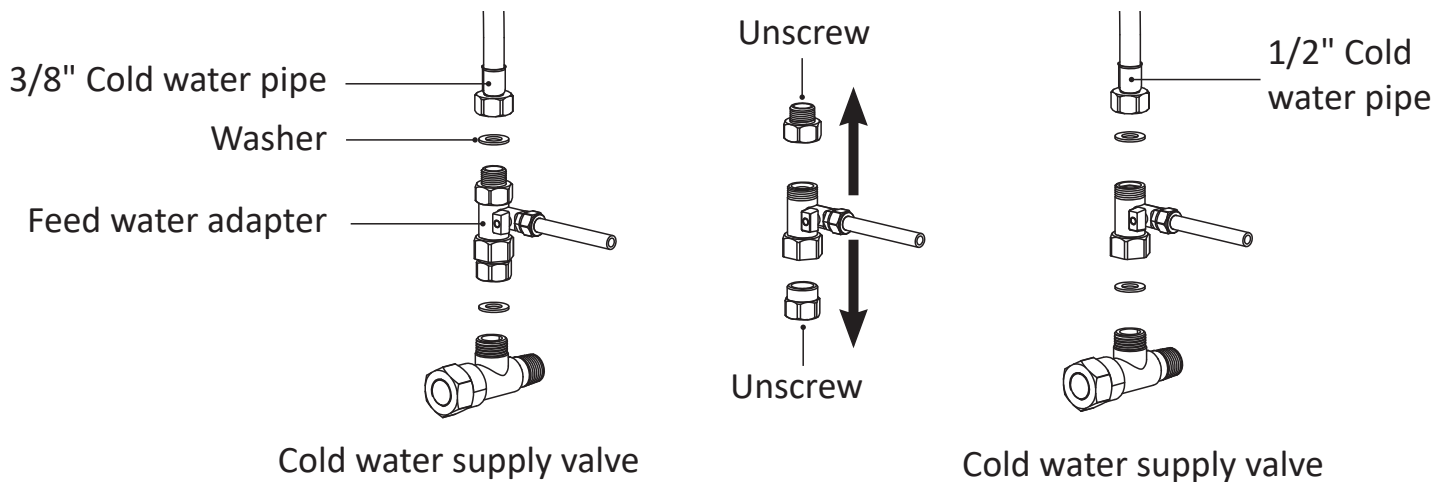
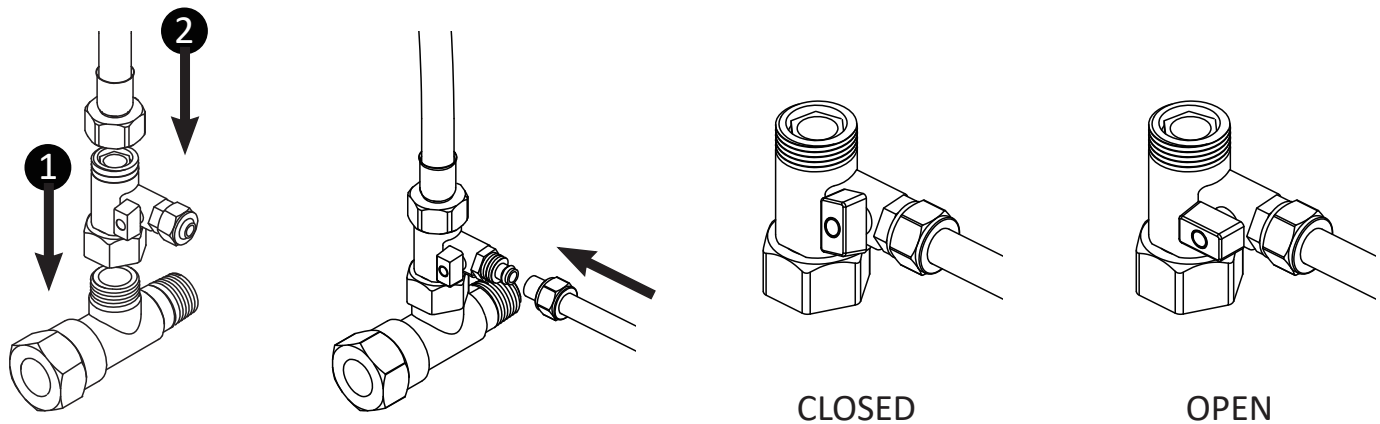
STEP 2 Install Inlet Tee Valve and Tubing

Note: Ensure water valve is turned off before continuing.

1. Place a pan or bucket under cold water line to catch any excess water. With an adjustable wrench, disconnect cold water line from the supply line at shut off valve.
2. Attach threaded ends of inlet tee valve to the cold water line of the shut-off valve. Tighten with wrench. Do not over tighten.
3. Reattach the cold water line to the top of the tee valve.

NOTE: In the event the cold water pipe has a 1/2-in. diameter, Unscrew hex reducers from top and base of the tee valve. Follow 2 & 3.

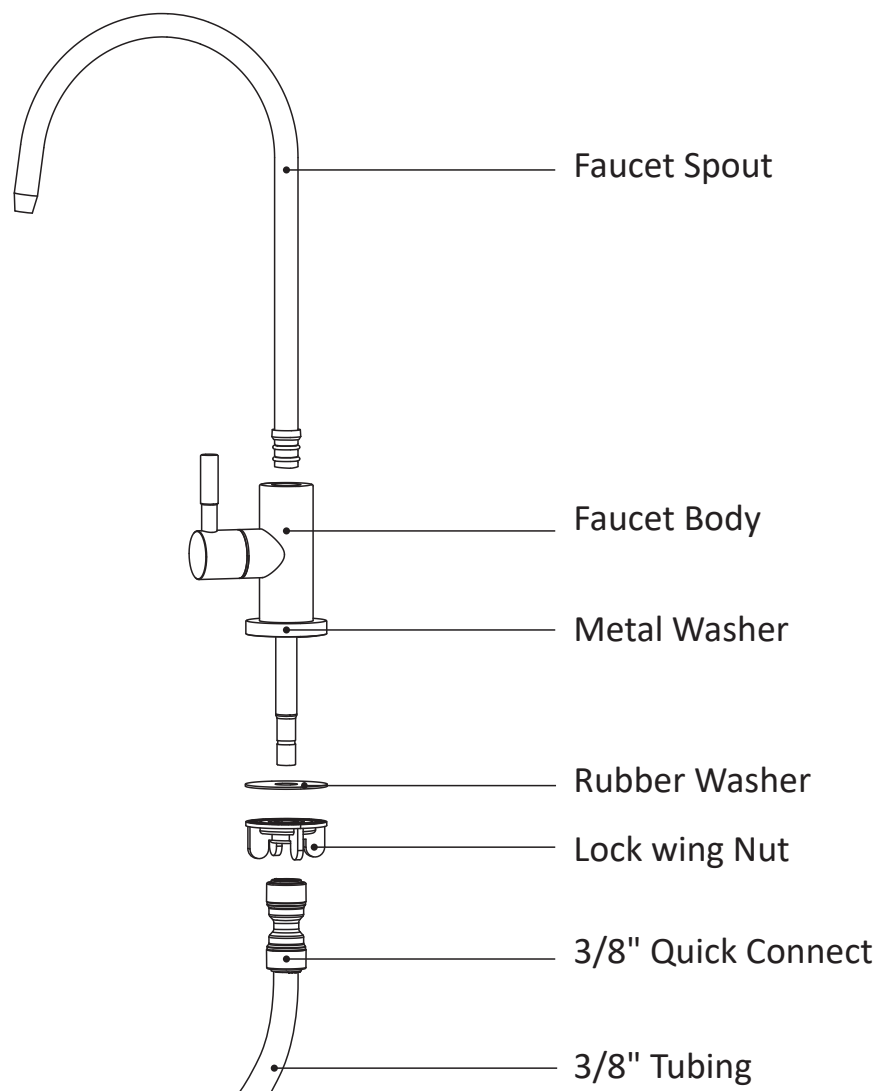
4. Push one end of 3/8" black tubing into the quick connect. Ensure inlet tee valve is in the open position.



STEP 3 Install RO Faucet (Non-Air Gap Faucet)

Note: The drinking water faucet should be positioned with function, convenience, and appearance in mind. An adequate flat area is required to allow faucet base to rest securely. The faucet fits through a 3/4" hole. Most sinks have pre-drilled 1-3/8" or 1-1/2" diameter holes that may be used for faucet installation. If these pre-drilled holes cannot be used or are in an inconvenient location, it will be necessary to drill a 3/4" hole in the sink to accommodate the faucet.

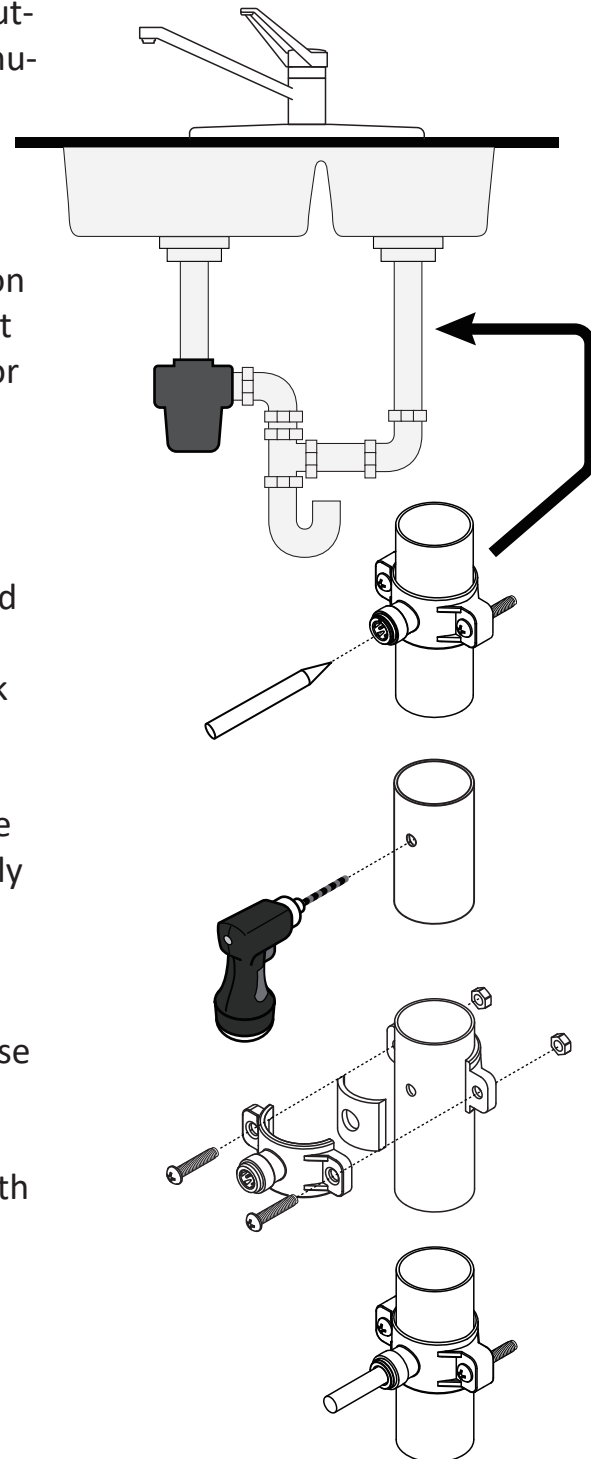
1. Slide front plate into faucet stem, feed faucet into countertop hole.
2. Underneath countertop, slide rubber washer, and then metal washer onto faucet stem. Place lock washer wing nut under faucet stem.
3. Tighten lock washer wing nut until it is firm to secure faucet in place.
4. Attach 3/8" quick connect to the end of faucet stem.
5. Push one end of 3/8" white tubing into the quick connect.



STEP 4 Install Drain Saddle

WARNING: Ensure all electrical appliances and outlets are turned off at circuit breaker before continuing. Please wear safety glasses when drilling.

1. Identify drain outlet location on drainpipe to install drain clamp. Do not install drain clamp on the same drainpipe as garbage disposal. Mount drain clamp as low as possible on the vertical or horizontal drainpipe tailpiece.
2. Using the drain connector hole as a template, drill a 1/4" hole into the drainpipe. Only drill through one side of the drainpipe.
3. Take the connection half of the drain clamp and attach the foam gasket. Do so by removing the center hole and protective cover from the back of the foam gasket. Align the foam gasket hole with the hole on the inside of the drain clamp. The adhesive side of the foam gasket should be facing the inside of the drain clamp. Press firmly to attach.
4. Insert nuts into the other half of the drain clamp. Place both halves together around the drainpipe, aligning with the hole you drilled. Use drill bit to help align.
5. Tighten nuts and screws to secure the drain clamp halves around the drainpipe. Tighten with screwdriver. Do not over tighten.
6. Push one end of 1/4" red tubing into the quick connect.



STEP 5 Position Tankless RO Machine

1. Place tankless RO machine under the sink in a place that will be easy to access for filter change.
2. The machine should be set on a firm, solid flat surface that is able to support the weight of the unit.

STEP 6 Connect Tubings and Power Adaptor

Notes: Insert tubing completely to ensure connection. A fully connected tube can be inserted up to an inch. Wet end of tubing for easier insertion. After installing the tubing securely into the quick connect port, pull the tubing upwards and install the locking clip under the collet ring. Connect tubing to tankless RO machine in a way that does not bend, crimp, or kink tubing as this will affect system performance. If tubing is too long, measure and cut to necessary length.

- **Faucet Connect**

Connect 3/8" white tubing on the faucet to the tankless RO machine. Push other end of white tubing into the outlet port on the back of the machine, labeled as 'PURE'.

- **Inlet Tee Valve Connect**

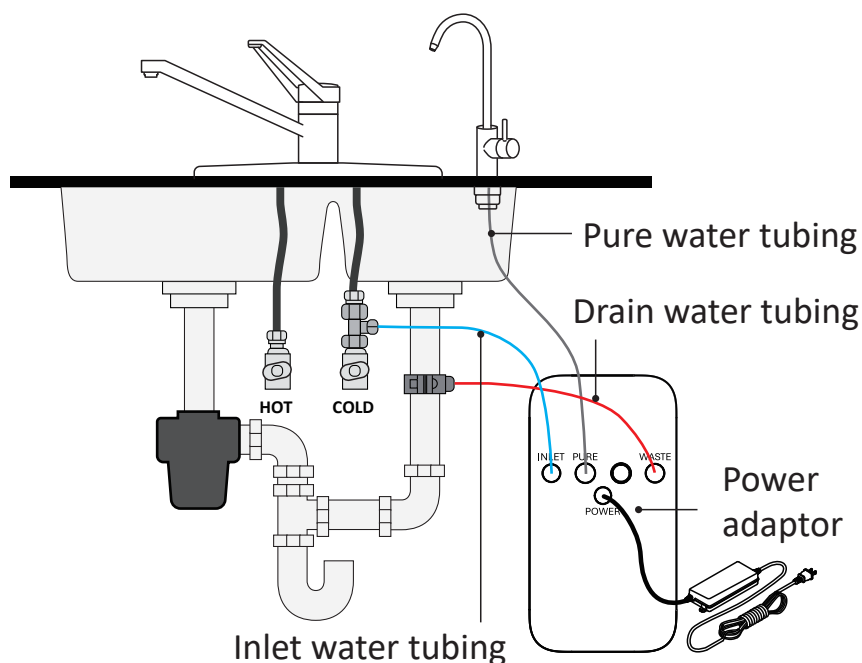
Locate the 3/8" blue tubing on the inlet tee valve to the tankless RO machine. Push other end of blue tubing into the inlet port on the back of the machine, labeled as 'INLET'.

- **Drain Saddle Connect**

Connect 1/4" red tubing on the drain saddle to the tankless RO machine. Push other end of red tubing into the outlet port on the back of the machine, labeled as 'WASTE'.

- **Power Adaptor Connect**

Locate the electrical adapter, and plug smaller end into the power receptacle on the back of the tankless RO machine.



Start-up the System

1. Ensure all water connections are completed as described in the Installation section.
2. Turn the cold water supply on.
3. Plug the power cord with adapter into a 3-prong outlet. The system powers on. The power light illuminates. The filter life light and water quality light flash briefly, then steadily illuminate.
4. Open faucet and allow it to run for 16 minutes. During this time the water quality indicator light will flash with the actual water quality color.
5. Do not drink flushing water. While flushing occurs, check the tightness of all parts and fittings carefully to ensure no leaks at the connection points.
6. Once flushing is complete, the faucet can now be closed. The machine will enter a normal water production state and the water indicator light will remain on with the actual water quality color.
7. To ensure best water tasting, it is recommended for the first day use to run water through the system 20 minutes every 2 hours with the faucet open. Use the water for cleaning.

Notes: If the faucet dispenses water for more than 30 minutes, uninterrupted, the water filtration system enters overtime protection mode. The filtration system is no longer able to produce water. To clear protection mode, close RO faucet handle, turn off power supply to the machine, then unplug the water filtration unit. Wait a few seconds, then plug unit back in and turn on the power.








Automatic Flushing

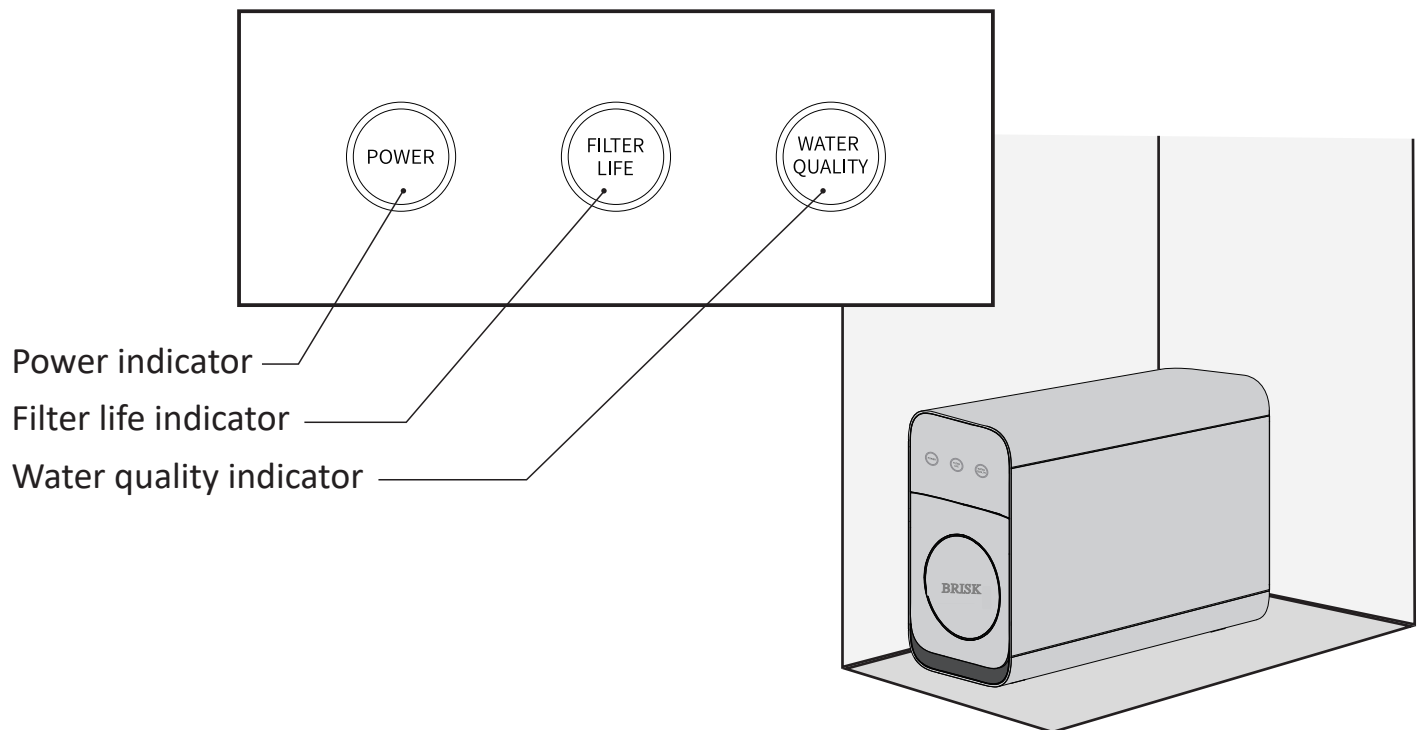
The system will flush automatically for 75 seconds to ensure to deliver clean and great-taste water anytime when,

1. Power is off and back on.
2. Every 24 hours after no use of water.
3. Programmed to your water use pattern.

Display

There are three sets of the indicator light on tankless RO machine to illustrate power, filter life and water quality status.

Power	<p>White Light</p>  <p>Power On</p>		
Filter Life	<p>White Light</p>  <p>Good</p>	<p>Orange Light</p>  <p>Replace Soon</p>	<p>Red Light</p>  <p>Replace Now</p>
Water Quality	<p>White Light</p>  <p>Excellent</p>	<p>Orange Light</p>  <p>Good</p>	<p>Red Light</p>  <p>Poor</p>



Care

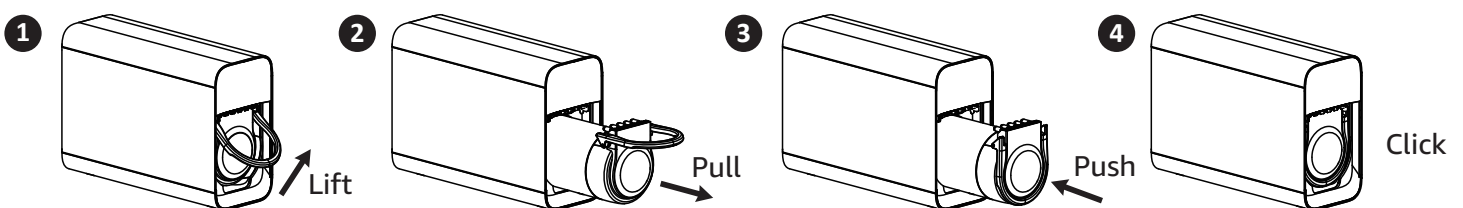
- Keep the system in a cool, dry place away from direct sunshine.
- Use a clean, soft cloth to remove dust buildup. Do not use soap, detergent, or harsh abrasives.
- Never lay the machine on its side or back. It should always be operated and stored in an upright position.
- If the cold water inlet temperature drops to 32°F, there is a risk the tubes could crack, and damaging leaking could occur. To prevent this, turn off the shut-off valve on the inlet tee valve, then open the handles of the faucet and drain any remaining water out of the filtration system.

Filter Replacement Schedule

Every 3 years or when Filter Life indicator light turns on Red which is per an average family of 4 daily water usage as municipal tap water as feedwater.

Replace Filter

When filter life indicator light begins to flash, the filter needs to be replaced. To change filter, after turn off the inlet shut-off valve and open the faucet to drain the water out of the system, and subsequently turn off the power to the machine, first remove old filter with a simple lift and pull, and then push new filter into the chamber until you hear a click sound. The entire process only takes seconds to complete.



Always flush new filters before using.

Filter Life Reset

Within 60 seconds of that the system is powered on, lightly press "FILTER LIFE". The "FILTER LIFE" indicator light starts to flash. Then press "FILTER LIFE" for 3 seconds. The reset completes and "FILTER LIFE" indicate light turns on white.

Problem	Probable cause	Solution
The filters are generating a light noise during operation.	The filters will generate a light noise during operation.	This is normal.
The water output volume has dropped.	<ul style="list-style-type: none"> · The filter is jammed. · The filter needs to be replaced. · The shut-off valve is not in the ON position. 	<ul style="list-style-type: none"> · Flush or replace the filter. · Replace the filter. · Check the shut-off valve and the faucet handles to ensure they are in the ON position.
The water quality is low.	<ul style="list-style-type: none"> · The filter needs to be replaced. · The filtration system has not been used for a long period of time (over 3 days). · The quality of the source water is low. · The ambient operating temperature is too low. 	<ul style="list-style-type: none"> · Replace the filter. · Rotate the RO handle open and flush the system for 3-5 minutes. · Confirm that the water source is municipal tap water. · Increase ambient temperature.
There is water leakage.	A component is damaged.	Immediately turn off water and power to the system, and contact customer service for assistance.
There is no water output after replacing a filter.	There is an air jam.	When replacing a filter, first press the power supply button to turn the unit off, unplug the water filtration system. Then shut off the water supply. Replace the filter. Turn the water supply back on and plug in the water filtration unit.

Limited Product Warranty

Who is covered:

BRISK (Hereinafter referred to as "Manufacturer") warrants to the original owner who purchased and installed the system (hereinafter "Owner").

What is covered:

This Warranty covers defects in materials or workmanship during the limited Warranty period of your BRISK Tankless Reverse Osmosis Water Filtration System (hereinafter "Product") including sub-components purchased with original system (may or may not include faucet and fittings), except as provided below. The product is warranted only when it is installed, operated and maintained in accordance with the instructions accompanying the product. A product should be installed in such a manner that, if the system or any connection thereto should leak, the resulting flow of water will not cause damage to the area in which it is installed. For detailed instructions read the manual accompanying the product and review drawings in the manual.

For how long:

This Warranty runs for 12 months (365 days) from the date of purchase by a consumer (hereinafter "Warranty Period"). No Warranty coverage will be provided if the claimant is unable to provide proof of purchase from an authorized BRISK reseller. Estimated lifespan of products is for information only and is based on usage approximations. Water conditions and use rates may limit the functional lifespan of your filter. This Limited Warranty does not extend to the full estimated life span of the system.

What BRISK will do:

If necessary, the Manufacturer will provide a replacement that fulfills the remaining estimated lifespan/capacity of your original purchase and send it to you with installation instructions. If industry standards, product improvements or product obsolescence prohibit Manufacturer from furnishing an identical model replacement product under this Warranty, the Owner will be furnished with a new product of comparable remaining capacity and functionality; however, the Owner will be charged for the additional value of the item(s) which Manufacturer has incorporated in the replacement product. The Warranty period for any replacement will run for the balance of the original one year.

2. Component Part – If any component part proves to Manufacturer's satisfaction to be defective in material or workmanship within the Warranty period listed on the data plate label, the Manufacturer will furnish the Owner with a replacement for the defective part(s).

3. Return of Defective Product and Component Parts – Manufacturer reserves the right to examine the alleged defect in the product or component part(s), and it will be the Owner's obligation to return the product and/or component part(s) to the Manufacturer at the Manufacturer's request. a. When returning a product, it must include all component parts. b. When returning component part(s), they must be individually tagged and identified with the product's model number, date of purchase, and date of installation.

What is not covered:

1. This Warranty does not cover the product and any systems that were not installed in compliance with the instructions or that have been abused or operated incorrectly.

2. This Warranty applies only to products purchased from authorized BRISK resellers.

3. The Limited Warranty stated herein is in lieu of any and all warranties, express or implied (whether written or oral), including, but not limited to, the implied warranties of merchantability and fitness for a particular purpose.

4. Manufacturer shall not be liable for any incidental, consequential, special, punitive, or contingent damages or expenses, arising, directly or indirectly, from any defect in the product or the use of the product, including but not limited to water damage.

5. Manufacturer shall not be liable for any water damage arising, directly or indirectly, from any defect in the product or component part(s) or from its use.

6. Manufacturer shall not be liable for any damage or product failures caused by any of the following:

- The product or any of its component parts have been subject to misuse, alteration, neglect or accident.
- The product has not been installed in accordance with the applicable local plumbing and/or building code(s) and/or regulations or in their absence.
- The product is not installed, operated and maintained in accordance with the printed Manufacturer's instructions, including if the product has any additional aftermarket equipment introduced into the sealed system not approved by the manufacturer.
- The product is exposed to highly corrosive conditions.
- The product is not continuously supplied with potable water.
- The product is not operated within the factory calibrated temperature limits.
- The product is installed in direct sunlight or exposed to freezing temperatures.
- The product or any of its component parts fail due to sediment build-up.
- Clogging due to purchaser's failure to replace the filter.
- Damage caused by fire, flood or acts of God.
- Damage caused by over-pressurization in the water line.

7. Manufacturer shall not be liable for any claims related to excessive noise, smell, or taste of water.

8. This Warranty does not cover damage caused by the use of parts that are not genuine BRISK parts. This includes, but is not limited to replacement filters, faucets, and/or diverter valves.

9. Except when specifically prohibited by the applicable state law, the Owner, and not the Manufacturer, shall be liable for and shall pay for all charges for labor or other expenses incurred in the removal, repair or replacement of the product or any component part(s) claimed to be defective or any expense incurred to remedy any defect in the product. Such charges may include, but are not necessarily limited to:

- a. All freight, shipping, handling and delivery costs of forwarding a new product or replacement part(s) to the owner.
- b. All costs necessary or incidental in removing the defective product or component part(s) and installing a new product or component part(s).
- c. Any material required to complete, and/or permits required for, installation of a new product or replacement part(s), and
- d. All costs necessary or incidental in returning the defective product or component part(s) to a location designated by the Manufacturer.

How to get service:

To receive service under this Warranty, you must contact us within the Warranty Period on <https://www.jubei-group.com/>. You are required to provide the information of description of problem, product model number, unit serial number, your name and address. Our customer service representative will contact you to verify that if the product is under Warranty and determine whether a part or the system will be replaced and whether you must send back the unit. You will be required to provide proof of purchase from an authorized BRISK reseller and proof of proper installation.

Warranty registration:

Warranty registration is not required for coverage under the BRISK Limited Warranty. If you purchased from a retailer or an authorized reseller, please complete the online Warranty registration form at <https://www.jubei-group.com/>. Proof of purchase from an BRISK authorized dealer is required. Once registered online, we will have a record of your purchase.

How state law applies:

This Warranty gives you specific rights and you may have other rights which vary from state to state. Some states do not allow the exclusion or limitation of incidental or consequential damages, so the above limitation or exclusion may not apply to you.

BRISK

No. 35 Shangtang Street, Kangqian Sub-district, Deqing County
Huzhou, Zhejiang, China